

# QUASAR II

**NEU / NEW**  
40 kVA - Version



Online double-conversion 10, 15, 20, 25, 30, 40kVA

As one of the first UPS on the market, QUASAR II from EFFEKTA® can be programmed on every required phase configuration via software:

**Selective:**

- 1-phase input and 1-phase output
- 1-phase input and 3-phase output
- 3-phase input and 1-phase output
- 3-phase input and 3-phase output

Particularly, the configuration of 1-phase input and 3-phase output is unique on the UPS market.

The usage of IGBT-rectifiers reduces the distortion of the connected mains. The current consumption is almost ideal sinus and the power factor is increased compared with traditional thyristor designed UPS.

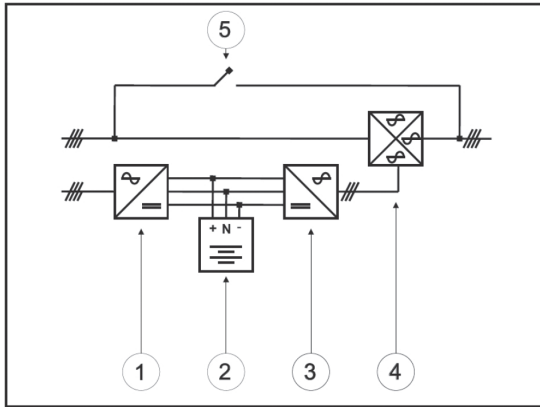
Considerable and comfortable extension possibilities simplify the dimensioning and professional involvement of the installation in any environment. Amongst others, several systems can be switched in parallel, to increase the reliability through redundant operation.

## Features

- UPS-classification VFI-SS-111 in accordance with IEC 62040-3
- Online double-conversion with sine-wave output
- IGBT-rectifier
- Comfortable front control panel incl. EPO
- Interface for EPO remote control
- Space-saving cable feeding from the bottom of the housing
- Small dimensions  
(all models 910 x 390 x 900 mm)
- Expandable autonomy time
- 24 months' warranty

## Options:

- Parallel configuration
- Power extension 10 to 15kVA  
20 to 25 or 30 kVA
- Output isolating transformer
- Slot for optional adapter: relay-card, opto-coupler, USB or SNMP



- block diagram:
1. IGBT power input
  2. Battery
  3. Inverter power IGBT
  4. Static Switch
  5. Manual Bypass



Control panel: Quasar II has a clear control panel, in which the EPO switch is already integrated.

# Specifications

Model		QUASAR II 10kVA	QUASAR II 15kVA	QUASAR II 20kVA	QUASAR II 25kVA	QUASAR II 30kVA	QUASAR II 40kVA
<b>Power</b>		10kVA / 8kW	15kVA / 12kW	20kVA / 16kW	25kVA / 20kW	30kVA / 24 kW	40kVA / 32kW
<b>Efficiency (AC-AC) - % (ECO-mode)</b>		>98% (ECO-mode), >93% (Online-mode, bei 75% load)					
<b>Input</b>	Voltage nominal	Programmable on 3- o. 1-phase: 3-ph. 380VAC / 1-ph. 230VAC					
	Voltage tolerance	380-415VAC ± 10VAC			380-415VAC ± 20VAC		
	Frequency	50Hz / 60Hz adjustable					
	Power Factor	0.8					
<b>Output</b>	voltage	Programmable on 3- o. 1-phase: 3-ph. 380/400/415VAC / 1-ph. 220/230/240VAC					
	Frequency	50/60Hz ± 0.005Hz (battery mode) ± 1Hz synchronized (line mode)					
	Voltage form	Sinus-wave					
	Distortion	<3% (linear load), 5% (nonlinear load), in accordance with IEC 62040-3			<3% (linear load), 5% (nonlinear load), in accordance with IEC 62040-3		
	Crest factor	3:1					
<b>Batteries</b>	Type	Maintenance free sealed lead-acid battery					
	Capacity	Internal 60 x 5Ah, 7Ah or 9Ah					
	Autonomy	10 minutes by nominal load / expandable					
	Voltage nominal	720VDC					
	Min. discharge voltage	600VDC					
	Charging voltage	810VDC					
	Charging time	7-8 h at 90% of total capacity after complete discharge					
<b>Transfertime</b>	AC-DC to bypass	<1ms					
<b>Display</b>	LCD	Alphanumeric display					
	LED	Normal operation / alarm					
<b>Acoustic alarm</b>	Restable	Yes					
<b>Interface</b>	RS-232 Interface	Yes					
	SNMP (optional)	Powermanagement via optional SNMP-Adapter and Webbrowser					
	Relay contacts (optional)	4 signals via additional expansion card					
<b>Environment</b>	Temperature	0-40°C (battery 20- +30°C)					
	Humidity	< 90% non condensing					
	Audible noise (@ 1m distance)	< 58dBA					
<b>Weight</b>	Without batteries	60kg	60kg	65kg	65kg	65kg	65kg
	Incl. batteries	230kg	230kg	235kg	235kg	235kg	235kg
<b>Dimensions</b>	HxWxD in mm	910x390x900	910x390x900	910x390x900	910x390x900	910x390x900	910x390x900
<b>Safety</b>		EN 50091-2, CEI-EN 62040-1-1, CEI EN 62040-1-2, CEI EN 62040-2, CEI EN 62040-3, CE					
<b>Enclosure</b>		IP 20					
<b>Colour</b>		anthracite RAL 7016					